

Mika

Low-Voltage Track

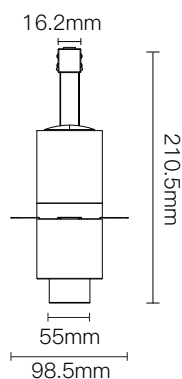
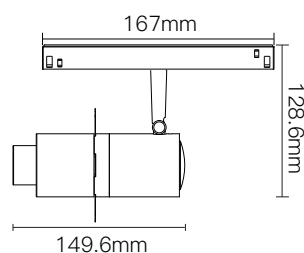


● Black

Features



Dimensions



Electrical system

| | |
|---------------------------------|------------------------|
| Total power consumption: | 12W |
| Power input: | 48V |
| Operating temperature: | -10°C ~ 35°C |
| Dimming option: | 0-10V / Dali / Casambi |
| Insulation class: | Class III |

Light source

| | |
|--------------------|-------------------|
| LED type: | COB |
| CCT: | 2700K/3000K/4000K |
| CRI: | Ra>90 |
| Beam angle: | Beam shaper |
| UGR: | <10 |

Housing

| | |
|----------------------------|----------|
| Lamp body diameter: | 55mm |
| Material: | Aluminum |
| Weight: | 431g |

Warranty

| | |
|----------------|-----------------|
| Period: | 5-year warranty |
|----------------|-----------------|

Lumen output

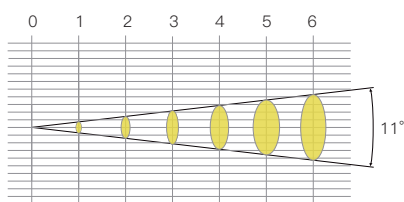
| BA. \ CCT | 2700K | 3000K | 4000K |
|-------------|-------|-------|-------|
| Beam shaper | 300lm | 300lm | 315lm |

Nomenclature

*Applicable model: M41612xx90xxxx (xx: dynamic codes)

| Product Code | System Power | CCT | CRI | Beam Angle | Driver/Control | Serial No. |
|--------------|--------------|-------------------------------------|--------|------------|--|------------|
| M416 | 12(12W) | 27(2700K) 30(3000K) 40(4000K) | 90(90) | SP(Shaper) | N(Non-Dim) A(0-10V dim) D(DT6) E(DT8) | 01(Black) |

illumination distance (m)



11° Round light pattern (cm) 0 Ø21 Ø42 Ø63 Ø83 Ø103 Ø125

Mika PRO Low-Voltage Track



Electrical system

| | |
|---------------------------------|------------------------|
| Total power consumption: | 12W |
| Power input: | 48V |
| Operating temperature: | -10°C ~ 35°C |
| Dimming option: | 0-10V / Dali / Casambi |
| Insulation class: | Class III |

Light source

| | |
|--------------------|-------------------|
| LED type: | COB |
| CCT: | 2700K/3000K/4000K |
| CRI: | Ra>90 |
| Beam angle: | Beam shaper |
| UGR: | <10 |

● Black

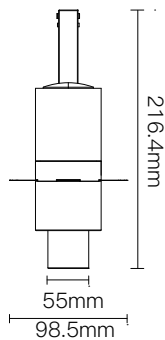
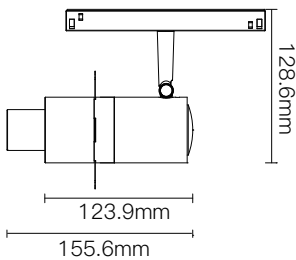
Features



Housing

| | |
|----------------------------|----------|
| Lamp body diameter: | 55mm |
| Material: | Aluminum |
| Weight: | 435g |

Dimensions



Warranty

Period: 5-year warranty

Lumen output

| BA. \ CCT | 2700K | 3000K | 4000K |
|-------------|-------|-------|-------|
| Beam shaper | 227lm | 252lm | 270lm |

Nomenclature

*Applicable model: M41612xx90xxxx (xx: dynamic codes)

| Product Code | System Power | CCT | CRI | Beam Angle | Driver/Control | Serial No. |
|--------------|--------------|-------------------------------------|--------|------------|--|------------|
| M420 | 12(12W) | 27(2700K) 30(3000K) 40(4000K) | 90(90) | SP(Shaper) | N(Non-Dim) A(0-10V dim) D(DT6) E(DT8) | 01(Black) |

illumination distance (m)

